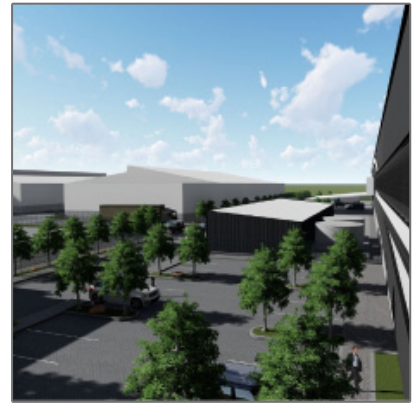


# Meadowview Logistics Hub

## Unit 2

4,220 m<sup>2</sup> - Ronald Avenue, Longlake, Gauteng



### Basic Description

Property Type:	<b>Industrial Development</b>
Listing Type:	<b>To Let</b>
Listing ID:	<b>1623</b>
Park:	<a href="#"><b>Meadowview Logistics Hub</b></a>
Price:	<b>POA</b>
Lease Type:	<b>Gross Rental</b>
ERF Size:	<b>8,000 m<sup>2</sup></b>
Gross Lettable Area:	<b>4,220 m<sup>2</sup></b>
Warehouse:	<b>3,500 m<sup>2</sup></b>
Office:	<b>500 m<sup>2</sup></b>
Mezzanine:	<b>220 m<sup>2</sup></b>
Ownership:	<b>Freehold</b>
Zoning:	<b>Light Industrial</b>

### Features

Truck Access:	<b>Superlink</b>
Sprinkler System:	<b>Pumps and Tanks</b>
Amps Power:	<b>0</b>
Floor:	<b>FM2</b>
Security:	<b>Guard, Access Control, Fully Fenced</b>

Address [Map](#)

---

Country : **South Africa**

Province: **GP**

City: **Sandton**

Suburb: **Longlake**

Street Name: **Ronald Avenue**

Building Name: **Meadowview  
Logistics Hub**

Unit: **2**